

Solvent Dyes

金属络合溶剂染料



木器漆
Wood Paint

烫金膜
Stamping Foil Coloring

皮革喷漆
Leather Spraying

透明溶剂墨
Transparent Solvent Base Ink

 **明辉化工**
MING HUI CHEMICALS



Solubility/溶解度 (g/l)

明辉编号 MH Code	Solvent 溶剂	ALCOHOL 99.5% N 酒精 99.5%	ISOPROPRANOL 异丙醇	PM 丙二醇甲醚	ETHYLACETATE 乙酸乙酯	MEX 二甲苯	SOLVENT MIXTURE 混合溶剂
MH YELLOW 175 (S.Y.162)		80	70	200	300	400	300
MH YELLOW 181 (S.Y.79)		190	40	240	>500	>500	400
MH YELLOW 20 (S.Y.21)		280	250	220	480	>500	450
MH YELLOW 57 (S.Y.82)		260	80	300	460	470	370
MH YELLOW AB (S.O.11)		50	25	150	150	200	150
MH YELLOW KK (S.O.45)		300	140	220	460	400	>500
MH ORANGE 09 (S.O.62)		230	70	190	150	500	400
MH ORANGE 10 (S.O.54)		230	60	180	>500	>500	480
MH RED 04 (S.R.8)		180	170	330	300	500	250

*混合溶剂:乙醇 60%, 甲苯 30%, 醋酸乙酯 10%

*SOLVENT MIXTURE: Alcohol 60% Toluene 30%, Ethyl Acetate 10%

Color Shade/色卡

Coated Paper/铜版纸

Foil/烫金膜



*制备: MH染料1%, 稀释剂 33%, 清漆 66%

*Formulation: MH Dye stuff 1%, Thinner 33%, Varnish 66%

Solubility/溶解度 (g/l)

明牌编号 MH Code	Solvent 溶剂	ALCOHOL 99.5% N:99.5%	ISOPROPRANOL 异丙醇	PM 正己烷 溶剂	ETHYLACETATE 醋酸乙酯	MEX 二甲苯	SOLVENT MIXTURE 混合溶剂
MH RED 55 (S.R.119)		10	<10	300	10	>500	360
MH RED 06 (S.R.122)		200	80	200	400	500	330
MH RED 357 (S.R.124)		10	<10	340	20	300	430
MH RED 12 (S.R.49)		30	20	260	>500	300	320
MH RED 10 (S.R.218)		180	<10	30	<10	200	360
MH BLUE 03 (S.B.5)		30	<10	<10	-	20	180
MH BLUE BS (S.B.45)		55	65	230	295	390	300
MH BLUE BL (S.B.136)		200	200	200	25	300	200
MH BLUE 06 (S.B.70)		90	130	210	15	450	350

*混合溶剂:乙醇 60%, 甲苯 30%, 醋酸乙酯 10%

*SOLVENT MIXTURE: Alcohol 60% Toluene 30%, Ethyl Acetate 10%

Color Shade/色卡

Coated Paper/铜版纸

Foil/烫金膜



*制备: MH染料1%, 稀释剂 33%, 清漆 66%

*Formulation: MH Dyestuff 1%, Thinner 33%, Varnish 66%

Solubility/溶解度 (g/l)

明牌编号 MH Code	Solvent 溶剂	ALCOHOL 99.5% N:99.5%	ISOPROPRANOL 溶剂	PM E: 溶剂	ETHYLACETATE 溶剂	MEX 溶剂	SOLVENT MIXTURE 溶剂
MH RED 55 (S.R.119)		10	<10	300	10	>500	360
MH RED 06 (S.R.122)		200	80	200	400	500	330
MH RED 357 (S.R.124)		10	<10	340	20	300	430
MH RED 12 (S.R.49)		30	20	260	>500	300	320
MH RED 10 (S.R.218)		180	<10	30	<10	200	360
MH BLUE 03 (S.B.5)		30	<10	<10	-	20	180
MH BLUE 85 (S.B.45)		55	65	230	295	390	300
MH BLUE BL (S.B.136)		200	200	200	25	300	200
MH BLUE 06 (S.B.70)		90	130	210	15	450	350

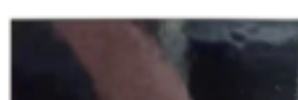
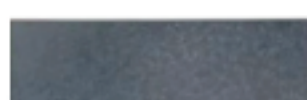
*混合溶剂:乙醇 60%, 甲苯 30%, 醋酸乙酯 10%

*SOLVENT MIXTURE: Alcohol 60% Toluene 30%, Ethyl Acetate 10%

Color Shade/色卡

Coated Paper/铜版纸

Foil/烫金膜



*制备: MH染料1%, 稀释剂 33%, 清漆 66%

*Formulation: MH Dyestuff 1%, Thinner 33%, Varnish 66%

耐热性

测试按中国国家标准GB/T 12680.5-90进行。染料配制
成油漆，均匀涂布在样板上，将样板分别放在150°C的
烘箱内烘烤。颜色变化用灰卡评价，5级为最好，1级为
最差。

耐光性

耐光性测试使用气灯曝晒法，按照ISO105B02标准进
行。用蓝羊毛卡评价颜色的变化，8级最好，1级最差。

迁移性

在已固化的有色硝基漆膜上涂一层白色的硝基漆，烘烤
150°C30分钟。用灰卡评价颜色的变化。最好5级，最差
1级。

耐水性

按照DIN 16524标准进行，对照灰色分级卡，评选滤液
的沾色级别。最好5级，最差1级。

耐酸性

按照DIN 16524标准进行，对照灰色分级卡，评选滤液
的沾色级别。最好5级，最差1级。

耐碱性

按照DIN 16524标准进行，对照灰色分级卡，评选滤液
的沾色级别。最好5级，最差1级。

溶解度

常温下1升溶剂中最多可以溶解的染料重量。

申明

我们的产品已通过如下标准：

欧洲玩具标准 EN 71-3, EN71-9

欧洲 Rohs指令

欧盟REACH认证

本样本所涉及数据是基于我司目前的知识及经验所得，
仅供参考，不做任何保证之用。

HEAT RESISTANCE

The determination is based on GB/T 12680.5-90. Confect the
dye to be paint, and coat the sample board with it smoothly.
Roast the sample board by oven at the temperature of
150°C , Assess the color change by gray scale. Grade 5 the
best, grade 1 the poorest.

LIGHT FASTNESS

Expose the dye under the xenon lamp, The determination is
based on ISO 105B02. Assess the color change by blue wool
scale. Grade 8 the best, grade 1 the poorest.

MIGRATION

After the colored NC lacquer coat is completely dry,spread
another coat of white nitrocellulose lacquer on it, Roast it
by oven at the temperature of 150°C for 30 minutes. Assess
the color change by gray scale.Grade 5 the best, grade 1 the
poorest.

WATER RESISTANCE

The determination is based on DIN 16524. Assess the color
change by gray scale. Grade 5 the best, grade 1 the poorest.

ACID RESISTANCE

The determination is based on DIN 16524. Assess the color
change by gray scale. Grade 5 the best, grade 1 the poorest.

ALKALI RESISTANCE

The determination is based on DIN 16524. Assess the color
change by gray scale. Grade 5 the best, grade 1 the poorest.

SOLUBILITY

The solubility is quoted in grams per litre, Small amounts of
dye are added to the solvent at room temperature
(22-25°C). After each addition, the mixture is shaken to
dissolve the dye. The procedure is continued until a
significant amount of dye remains undissolved. Any salts
and insoluble impurities are disregarded.

MH DYESTUFF

MH编号 TRADE NAME	索引号 C. I. NO.
MH Yellow 175	Solvent Yellow 162
MH Yellow 181	Solvent Yellow 79
MH Yellow 20	Solvent Yellow 21
MH Yellow 57	Solvent Yellow 82
MH Yellow AB	Solvent Orange 11
MH Yellow KK	Solvent Orange 45
MH Orange 09	Solvent Orange 62
MH Orange 10	Solvent Orange 54
MH Red 04	Solvent Red 8
MH Red 55	Solvent Red 119
MH Red 06	Solvent Red 122
MH Red 375	Solvent Red 124
MH Red 12	Solvent Red 49
MH Red 10	Solvent Red 218
MH Blue 03	Solvent Blue 5
MH Blue B5	Solvent Blue 45
MH Blue BL	Solvent Blue 136
MH Blue 06	Solvent Blue 70
MH Blue GN	Solvent Blue 67
MH Green 20	Mixtrue
MH Green 575	Mixtrue
MH Brown 02	Mixtrue
MH Brown 05	Mixtrue
MH Black 20	Solvent Black 27
MH Black 56	Solvent Black 28
MH Black 17	Solvent Black 29
MH Black 04	Solvent Black 34

牢度性能 Fastness Properties

耐热性 Heat Resistance	耐光性 Light Fastness	迁移性 Migration	耐水性 Water Resistance	耐碱性 Alkali Resistance	耐酸性 Acid Resistance
4	6	4-5	5	5	5
5	6-7	5	5	5	5
5	6-7	5	5	5	5
5	6-7	5	5	5	5
5	7	5	5	5	5
5	6-7	5	4-5	5	5
4	6-7	5	5	5	5
4	6-7	5	5	5	5
4	6-7	5	5	5	5
4-5	7	5	5	5	5
4	6-7	4-5	5	4-5	5
5	3-4	5	5	4-5	5
3-4	4-5	4	5	5	4-5
5	4-5	4-5	4-5	5	4-5
2	3-4	4	4	4	4-5
5	5	5	5	5	5
5	5	4-5	4-5	5	4
5	5-6	5	5	5	4
5	6	5	5	5	5
5	5-6	4-5	5	5	5
4	5-6	4	4-5	5	4-5
5	6-7	5	4-5	5	5
5	6-7	5	5	5	5
5	6-7	5	5	5	5
5	6-7	5	5	5	4-5
5	6-7	5	5	5	5
5	7	5	5	5	5
5	6-7	5	4-5	5	5

斯科特科技(无锡)有限公司

SPECTRA TECHNOLOGY (WUXI) CO.,LTD

地址: 江苏省, 无锡市, 锡山经济开发区, 芙蓉四路29号

Add: 29 Fu Rong 4th Road, Wuxi, Jiangsu, P.R.China

电话 / Tel: +86 (0) 510 8273 7507 传真 / Fax: +86 (0) 510 8270 9350

邮箱 / E-mail: info@groupsh.com 网站 / Web: www.spectra-tech.biz



Avery L7159